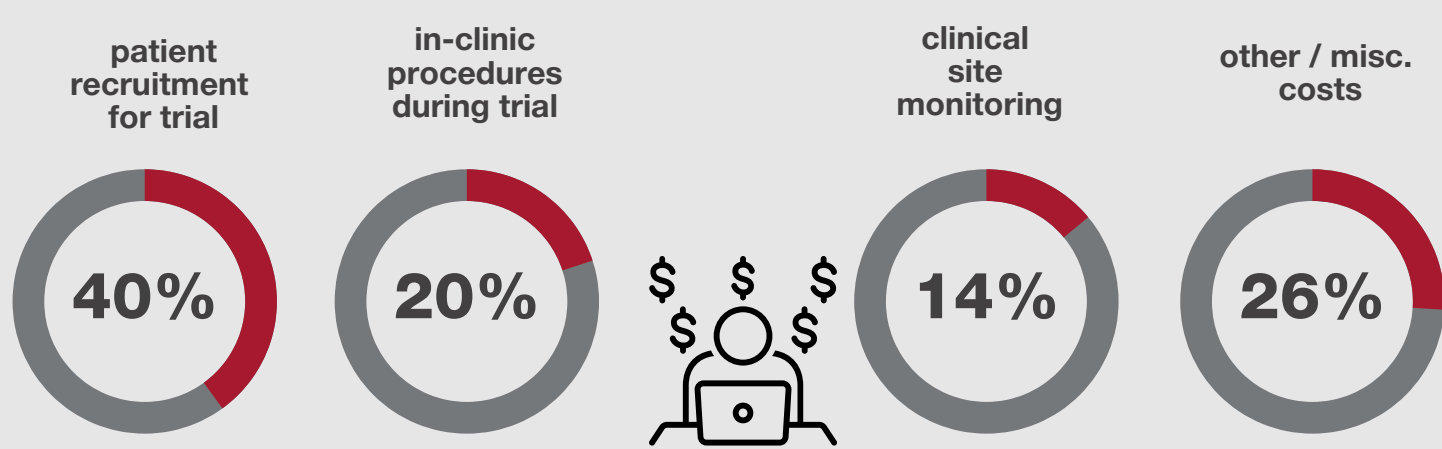


# MICROSAMPLING FOR LOWER COSTS IN DECENTRALIZED CLINICAL TRIALS

## THE COST OF CLINICAL TRIALS \$2.6 BILLION

THE ESTIMATED COST OF NEW DRUG DEVELOPMENT, INCLUDING ALL PHASES OF THE CLINICAL TRIAL.<sup>1</sup>



### COST BREAKDOWN OF A TRADITIONAL, ONSITE CLINICAL TRIAL<sup>1</sup>

## Can decentralized clinical trials reduce costs?

Trial costs can be reduced by enabling study recruits to participate remotely via telehealth communications (online portal, video conference, email & phone) and remote devices for self-sampling & self-monitoring at home.

A hybrid trial allows you to offer onsite training at the start, with offsite appointments thereafter. Offering remote options can help reduce staffing needs, recruitment costs, trial dropout rates, and trial delays.



### TRADITIONAL TRIAL

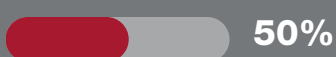


**\$3,685**

cost per person, per clinic visit<sup>1</sup>

**\$8 MILLION**

cost per day due to delays<sup>3</sup>



of trials are not completed due to insufficient enrollment<sup>3</sup>

### DECENTRALIZED CLINICAL TRIAL (DCT)



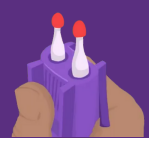
with no clinic visit\*



fewer delays with remote participation\*



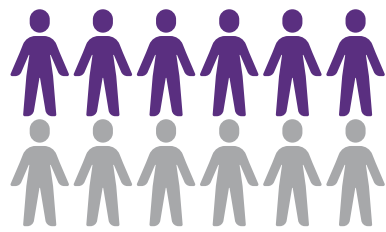
in non-enrollment (based on a large clinical trial)<sup>4</sup>



## LOWER YOUR CLINICAL TRIAL COSTS WITH REMOTE SAMPLE COLLECTION

### COST CHALLENGE:

Standard phlebotomy utilizes low-cost tools for blood sample collection, but the costs increase when hiring trained staff to collect blood samples onsite in clinical or home care settings.



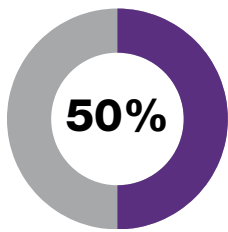
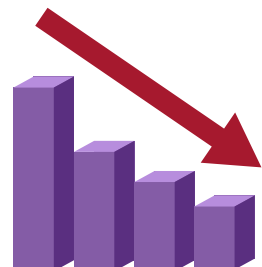
Predicted reduction in sample collection costs when study participants can collect their own samples at home.



### SAMPLE TRANSPORT

### COST CHALLENGE:

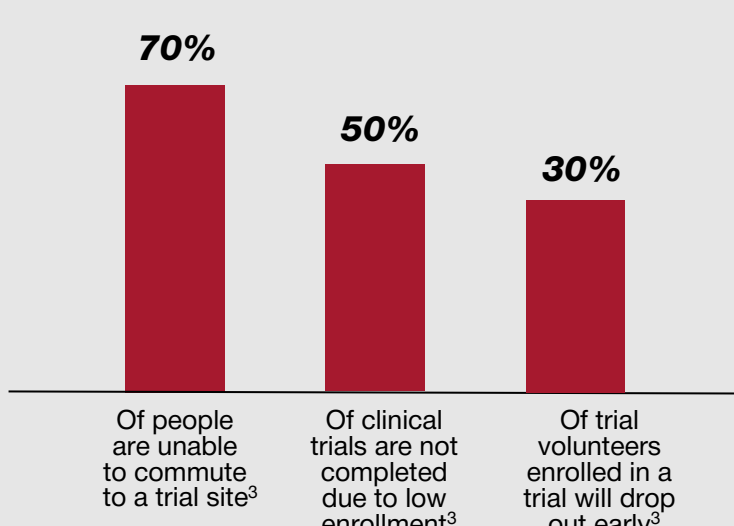
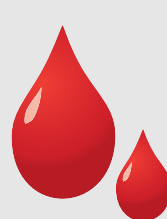
Liquid blood samples must be shipped rapidly via cold-chain transport to centralized laboratories, which increases trial costs and can also lead to sample errors if not shipped correctly.



Predicted reduction in transport costs of dried blood samples that can be shipped at ambient temperatures via regular post with good sample stability.

## Can You Reduce Trial Risks with Remote Microsampling?

If trial recruits can collect their own samples at home and participate remotely, they are more likely to enroll & less likely to drop out early.



Completion of clinical trials when barriers to onsite participation are overcome with remote options\*



Reduction in site visits when trial volunteers can self-collect samples at home and mail them to the lab\*



Improved retention of trial volunteers to completion of trial when they can participate remotely\*

Data represented in this infographic are based on in-house calculations or were derived from the sources listed below:



Trajan Scientific and Medical  
www.trajanscimed.com  
www.neoteryx.com

- <https://www.clinicalresearch.io/blog/industry-trends/cost-of-clinical-trials-breakdown/>
- <https://www.pharmavoices.com/news/financial-benefits-incorporating-decentralized-clinical-trial-dct-approaches/612058/>
- <https://www.clinicalleader.com/doc/tufts-finds-substantial-net-benefits-to-using-decentralized-trials-0001>
- [https://www.iqvia.com/-/media/iqvia/pdfs/library/white-papers/dcts-deliver-big-roi.pdf?\\_id=1663765134705](https://www.iqvia.com/-/media/iqvia/pdfs/library/white-papers/dcts-deliver-big-roi.pdf?_id=1663765134705)
- [https://www.researchgate.net/figure/Number-and-proportion-of-rejected-DBS-samples-at-the-NMRL-between-January-and-December\\_tbl1\\_335074925](https://www.researchgate.net/figure/Number-and-proportion-of-rejected-DBS-samples-at-the-NMRL-between-January-and-December_tbl1_335074925)
- <https://academic.oup.com/jalm/article-abstract/5/3/516/5815223>
- <https://www.clinicalleader.com/doc/what-your-sites-love-and-hate-about-dcts-0001>
- <https://pubmed.ncbi.nlm.nih.gov/30808156/>
- <https://www.future-science.com/doi/10.4155/bio.15.110>
- <https://pubmed.ncbi.nlm.nih.gov/25252132/>
- <https://www.ncbi.nlm.nih.gov/pubmed/9267312>
- <https://pubmed.ncbi.nlm.nih.gov/30808156>
- <https://journals.plos.org/plosone/article/fileid=10.1371/journal.pone.0167433&type=printable>