

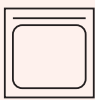
# blood sample collection kit instructions

Please read these instructions carefully before collecting your sample.

## kit contents



Lancet x2



Gauze x1



Bandage x2



Mitra<sup>®</sup>  
Cartridge x1

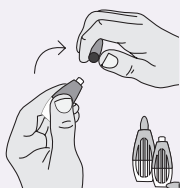


Silver Specimen  
Bag x1



Plastic Shipping  
Envelope x1

## first, unpack and prepare your kit contents



Twist off  
lancet caps



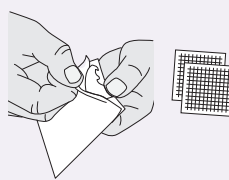
Tear open silver  
specimen bag



Remove  
Cartridge



Open  
Cartridge



Unwrap  
gauze



Unpeel back of  
bandages

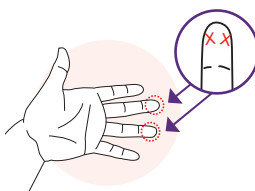
## step-by-step instructions



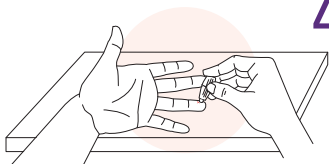
- 1 Wash your hands**  
with warm, soapy water.



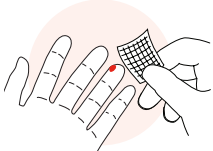
- 2 Warm your hands**  
by rubbing them together. You may also warm your hands by walking, jumping, or any other method you prefer. **Warming your hands is IMPORTANT for good blood flow.**



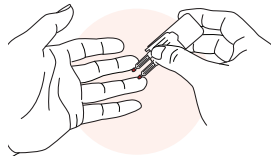
- 3 Select the finger you will use**  
to provide the blood sample. See illustration for recommended locations off-center of finger midline.



- 4 Prick your finger**  
by laying hand on a hard surface. Position the lancet on the chosen location. Apply firm pressure to end of lancet until a click is heard.



- 5 Wipe away first blood drop**  
with the gauze. A blood drop may take up to 20 seconds to form. If needed, gently massage pricked finger upward until drop forms.



You may apply sampling tips to the blood drop multiple times to fill.

Always point sampling tip towards floor when touching it to blood drop on your finger as shown above. Do NOT drip blood onto tip.

- 6 Collect sample by touching**  
one of the two sampling tips to the blood drop. First, watch it turn fully red. Next, count 2 seconds. Last, slowly remove the tip from blood. Repeat this process with the second sampling tip.

### ensure sampling tips are filled correctly

Under-sampling occurs when: 1) The sampling tip is removed from the blood too soon. Touch tip to blood until no white remains. 2) Blood flow stops. If this happens, repeat steps 4-6 with same tip until it turns fully red.



over-sampled

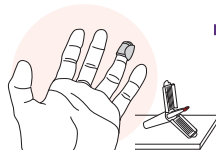


under-sampled

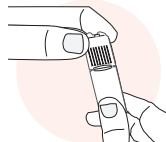


correctly sampled

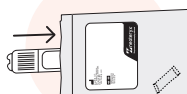
Over-sampling occurs when blood is dripped onto the sampling tip from above. Always touch sampling tip to blood drop as shown in step 6.



- 7 Set Cartridge device down**  
on hard surface and apply bandage to your finger.



- 8 Close Cartridge device**  
by lifting the sides to meet at the top. Press together until a click is heard.



- 9 Insert Cartridge device**  
into the specimen bag and seal shut. **Ensure the desiccant is still in the bag.**



- 10 Insert specimen bag**  
into plastic shipping envelope. Send to lab for processing as instructed.

### Intended Use

A single-use, non-sterile device used as a specimen collector and for the storage and transport of those collected biological fluids for *in vitro* diagnostic use.

### Intended User

The Mitra device is designed to be used by laboratory professionals and healthcare professionals.

### Disclaimer

The Mitra Microsampling Device is not specific to any clinical test nor does it provide a clinical diagnostic outcome of any nature. Clinical diagnostic laboratories, using the Mitra device for specimen collection, must validate tests according to their organizational needs and comply with relevant regulations. Mitra devices are CE-IVD self-certified in the UK and EU, a Class 1 IVD in Australia and China, and registered with Health Canada. In the United States, Mitra devices are for Research Use Only (RUO).

Neoteryx operates a Quality Management System (QMS) that is based on FDA good manufacturing practices, 21 CFR 820 regulations, and ISO-13485.

Copyright (C) 2021 Neoteryx, LLC. All rights reserved.